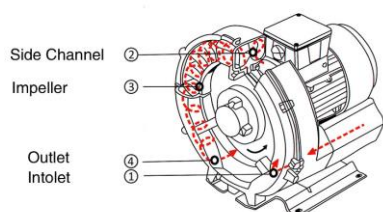


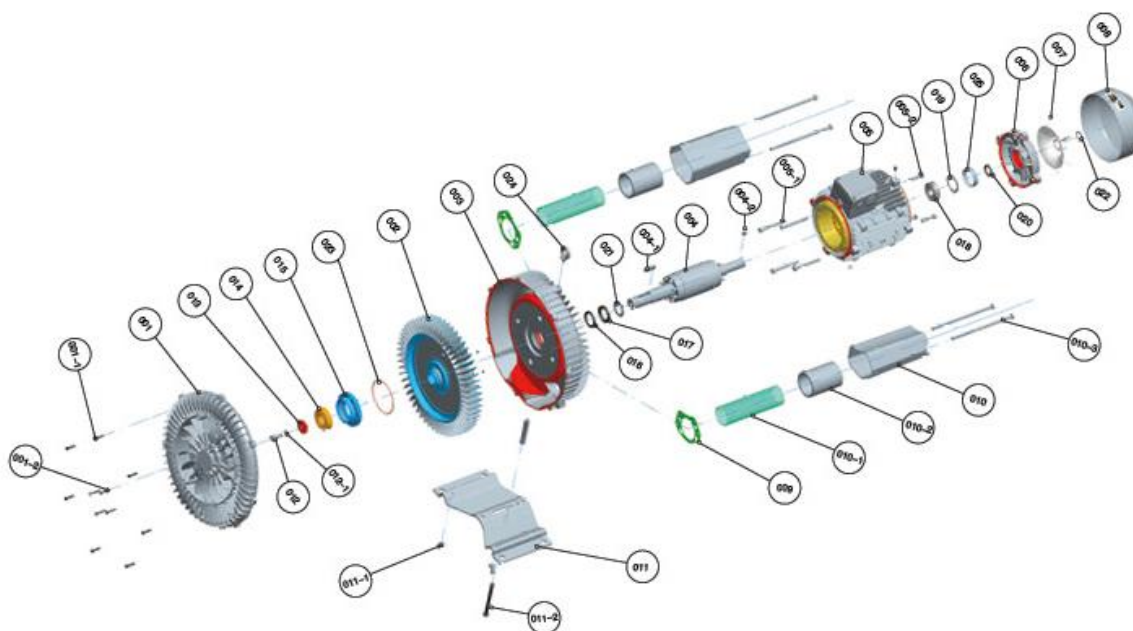
## GEMAS 2.2 KW BLOWERS



**Product Details:** The impellers are mounted directly on the motor shaft for noncontact compression entirely without friction. Maximum operational reliability, even at high differential is ensured by the arrangement of the bearings outside the compression chamber.

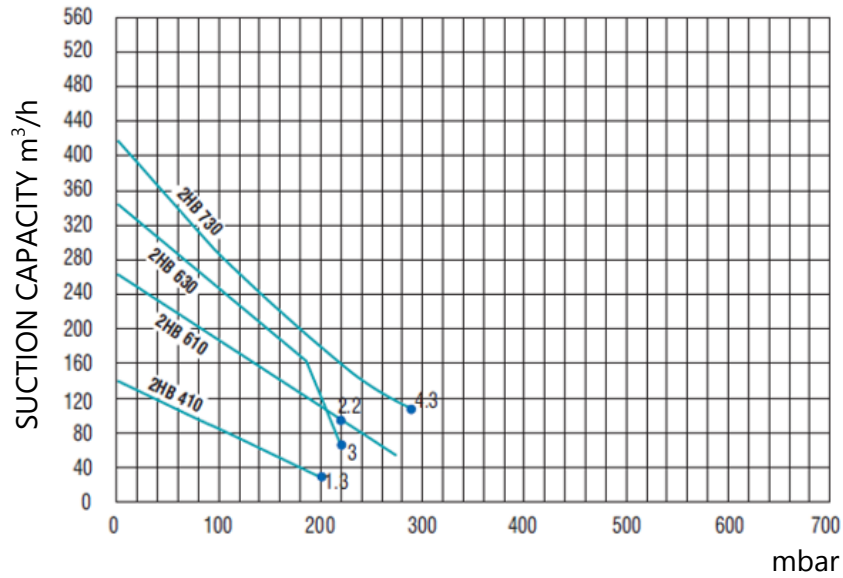
The gas is taken in through the inlet 1. As it enters the side channel 2, the rotating impeller 3 imparts velocity to the gas in the direction of rotation. Centrifugal force in the impeller blades accelerates the gas outward and the pressure increases. Every rotation adds kinetic energy.

## Technical Characteristic

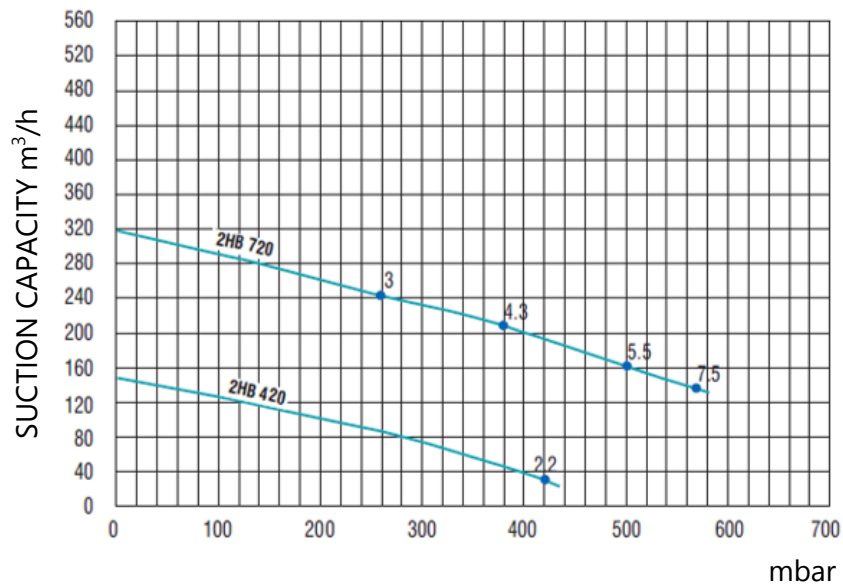


Part No	Description	Part No	Description	Part No	Description	Part No	Description
1	Pump Cover	11	Base	21	Washer	005-2	Screw
2	Impeller	12	Screw	22	Circlip	010-1	Mesh Enclosure
3	Pump Casing	13	Pressure Plate	23	O-Ring	010-2	Soundproof Sponge
4	Rotator	14	Screw	24	Hand Ring	010-3	Screw
5	Motor	15	Fixing Base	25	Wrap Ring	011-1	Screw
6	Motor Cover	16	Felt Ring	001-1	Screw	011-2	Screw
7	Fan	17	Oil Seal	001-2	Screw	012-1	Lock Washer
8	Fan Cover	18	Screw	004-1	Flat Key		
9	Paper Pad	19	Ware Washer	004-2	Flat Key		
10	Muffle Tube	20	Oil Seal	005-1	Screw		

PERFORMANCE CURVE-SINGLE STAGE



PERFORMANCE CURVE-DOUBLE STAGE



Code	Stage	Frequency (Hz)	Power (kW)	Voltage (V)	Current (A)	Max. Flow (m³/h)	Vacuum (mbar)	Pressure (mbar)	Noise (dB)	Weight (Kg)
15610H16	Single	50	2.2	220-380	9.7	265	-235	220	69	28
15420H46	Double	50	2,2	220-380	9.7	150	-330	420	66	27